



AIR DUCT CLEANING MACHINE

ABDALLA

**Compact Air Duct Cleaning Machine
Routing Brush , Vaccum , Camera**



ABDALLA (Air Duct Cleaning Machine)

Product function characteristics



100 -800mmCleaning diameter | Clean all kinds of dirt

ABALLA (AIR DUCT CLEANING MACHINE)

with camera is the all-in-one unit with brushing, vacuums and camera, which is suitable for 100-800mm ducts cleaning. The main unit is equipped with 10" high-definition LCD screen to ensure that there are no dead corners in cleaning. The brush speed is 0-1400rpm stepless adjustment.

HD display, Cleaner brushing

HD display in the air ducts

- High-definition night vision camera shows the inside of the duct clearly
- 10" high-definition LCD creen provides the full screen monitoring

Brush speed is adjustable

- 0-1400rpm stepless adjustment
Can clean various ducts

2 modes operation: manual & remote control

- Manual mode is easy to operate
- Remote control is effective within 1km.

Applicable to circular & rectangular, horizontal & vertical ducts



ABDALLA

(Air Duct Cleaning Machine)

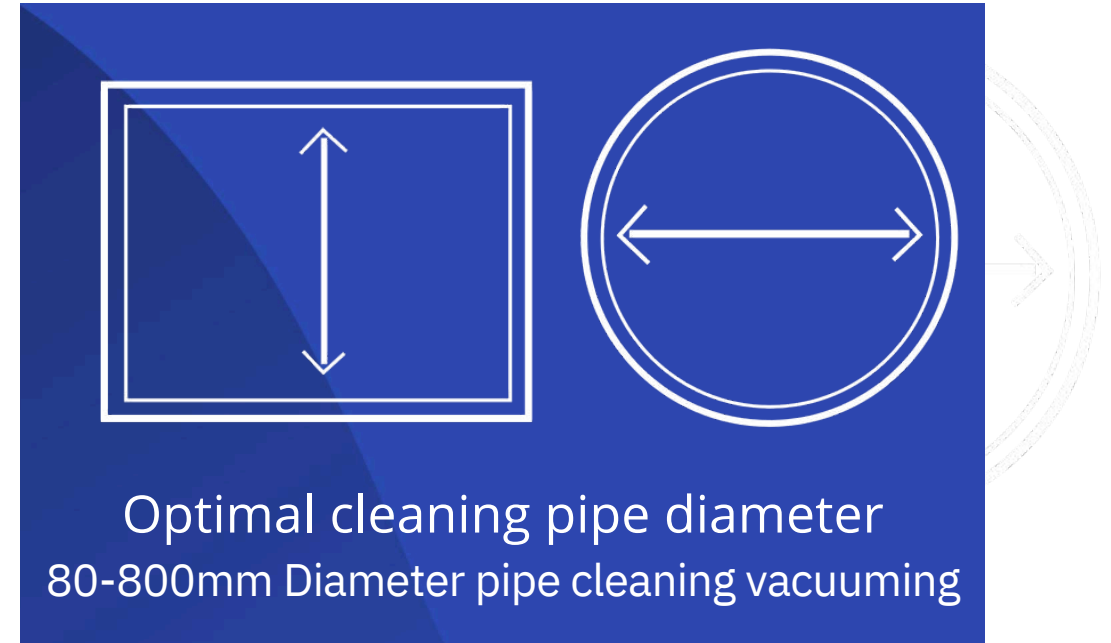


Model	ABDALLA	Name	Air Duct Cleaning Machine With Vacuums & Camera
Voltage	220V-240V/110V: 50Hz/60Hz	Light	A Highligh LED Light
Power	2800 W	Weight for main unit	45 KG
Brush Speed	0-1400 rpm (Stepless Adjustment)	Dimension for Main Unit	460mm X 402mm X 762mm
Display Size	10" HD LCD Screen	Applicable Dautc Range	100 mm to 800 mm
Camera Pixe	AHD HD Camera	Application	Horizontal and Vertical Air Duct

Applicable air duct range



**Round Duct / Square Duct
Horizontal Duct / Vertical Duct**



All-round three-dimensional cleaning of the air duct The vacuum cleaner absorbs and collects dust

Comparison of cleaning effect



before cleaning



after cleaning



before cleaning



after cleaning

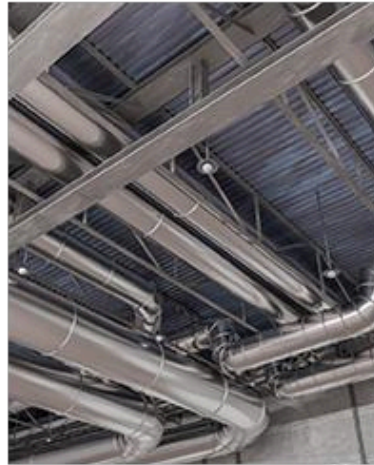
range of application



Feed pipe



Flour mill access



Air duct



Hospital



School



Hotel



MAGIC TOUCH GROUP

M33, C Block, New Al Safia Building, Hor Al anz, Deira, Dubai

Near Abu Hail Metro Station

Tel +971 4262 6510